

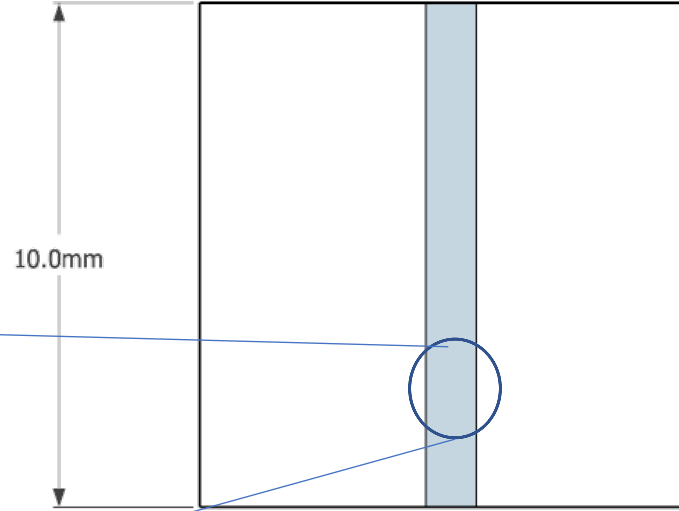
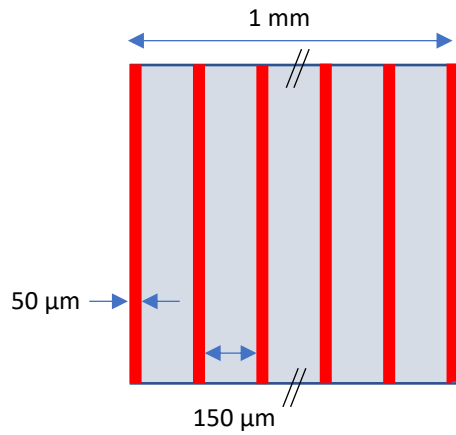
Goal: strongest weld possible
Critical weld width ~ 1 mm
(for standardized weld test at NREL)

Glass sample dimensions and weld placement

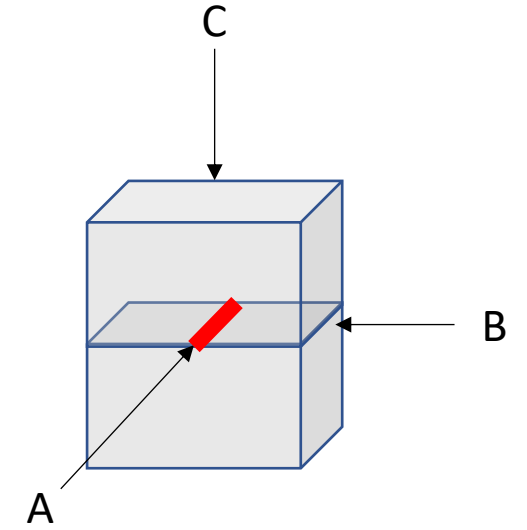
Glass = 10 mm x 10 mm x 3.2 mm thick

Proposed weld parameters: 50 μ m wide weld seams
(continuous if possible), 6 seams, 150 μ m between seams.

Proposed weld pattern

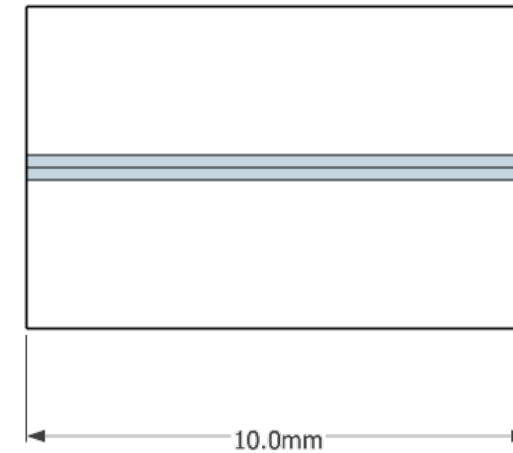
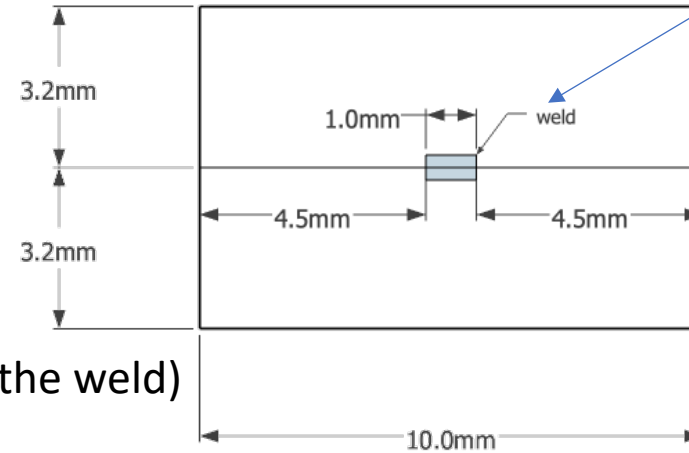


Top view C



Laser weld (multiple passes)

Side view A
(looking along the weld)



Side view B